

Improve the **yield**

Manage **quality controls**

Optimize your mouldsets

Plant Pilot

Trace your **pallets**

Glass **container** manufacturing

Tubes and drawn glass

Tableware

Decoration lines

Topics

Vertech' annual meeting

Vertech' annual meeting was held in October in Chalon-sur-Saône. The event was the opportunity to gather the whole team - including our technical and sales people working in Italy, USA and Mexico - to meet and go through key issues, review the new SIL functionalities, discuss new perspectives and developments for the future version.

Glasstec 2014

We would like to thank you for visiting our booth at Glasstec trade fair last week. We were happy to meet potential and existing customers and welcome many glass manufacturers from hollow ware, tableware, tube and drawn glass. We hope you really enjoyed the live demo of the plant management dashboard and multimedia notifications.



SIL2015: New functionalities

Among the new functionalities of the SIL 2015 presented at Glasstec, you will find:

Plant management dashboard with notifications in real time

The dashboard and notifications was the star feature of our booth!

This at-a-glance smart dashboard provides access to your most important **key production indicators**, sending real time notifications on:

- most important defects
- outputs for every production line
- current systematic rejections
- out of tolerance controls
- news about the plant
- etc.

with multi-site and multi-line support as well as a quick and **direct access to detailed information**.

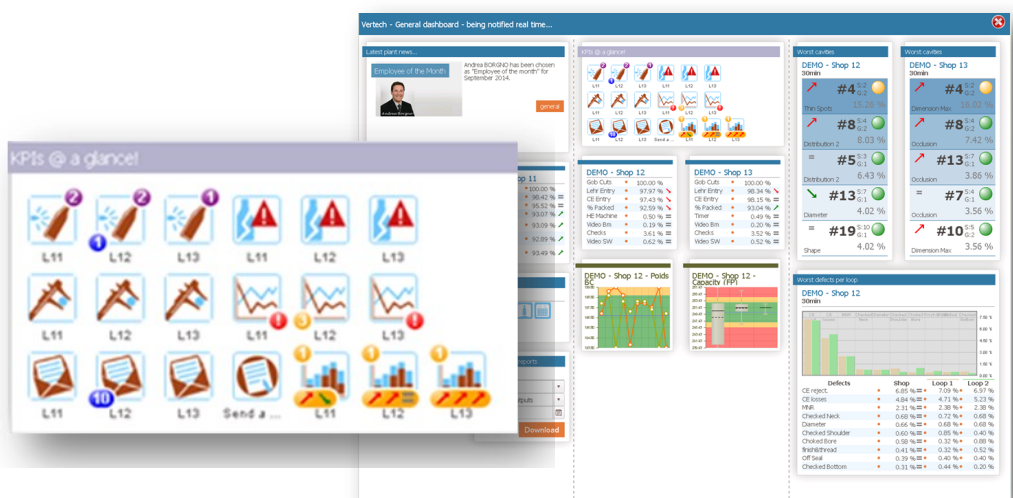
This dashboard also provides secure and personalized profile configuration available for access from smart devices, PCs, information displays or TVs.

Variable equipment management and follow-up

Equipment such as plungers, tubes, gob distributors, etc. have to be changed on periodic basis with short, medium or long term deadlines sometime happening at the same time. Now the SIL system allows following these equipment and scheduling their maintenance in order to optimize the changes.

Justification of production downtime

The TPM (Total Productive Maintenance) functionality allows registering production downtimes reasons such as: conveyor, lehr, palletizer, etc. to facilitate their analysis and help improve the performance of your processes.



[Link to SIL2015 catalogue](#)

Intra Vertech'



ISO 9001 Quality certification

The audit for the quality certification renewal will take place at the beginning of 2015.

Vertech' started the quality procedure and obtained its first certification in 2006. It is renewed every three years after an audit performed by LRQA firm, which makes also an annual audit for monitoring purposes.

Vertech' also makes internal audits throughout the year.

In that framework you will soon be receiving our annual survey, which enables us to evaluate your level of satisfaction better.

We thank you in advance for your kind participation!