

Improve your output

Hollow ware industry

Manage Quality controls

Follow your pallets

Tableware

Optimize your mould sets

Decoration Lines

## Europe

This month, let's have a look at our European customers, who have followed Vertech's development for nearly twenty years !

After being installed in France, the SIL solution was implemented in glass manufacturers in our neighbor countries: Italy, Germany, Spain, and more recently Belgium, Portugal, Romania and Greece.

Many SIL evolutions were developed in close collaboration with glass manufacturers in Europe, who have

frequently been leaders for new projects aimed to improve production line performance, or extend the SIL scope (for the management of raw materials and glass campaigns, pallet resorting, multi articles production, and adaptation of the SIL system to the glass tube industry).

The next trade fair dedicated to glass, Glasstec in Düsseldorf, will be an opportunity for our customers to discover the new 2015 functionalities of the SIL solution.



INTERNATIONAL TRADE FAIR FOR GLASS PRODUCTION • PROCESSING • PRODUCTS  
**Vertech' : Hall 14 Booth A42**

## SIL 2014: Operator Dashboard

The new SIL page you can't miss!

The Operator Dashboard gives an at a glance view of main key performance indicators:

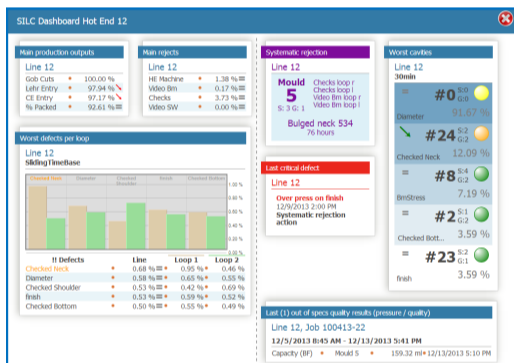
Most frequent defects, most rejected cavities, latest critical defects, main machine rejections, production yields, lab controls out of specifications, etc.

The Operator Dashboard page is a real browsing tool: with one click, you get the specific SIL view you want to check with full and complete information.

As screen saver, the Operator Dashboard appears after a few minutes of inactivity.

For more information please contact our sales team

[sales@vertech.eu](mailto:sales@vertech.eu)  
[www.vertech.eu](http://www.vertech.eu)



## Intra Vertech'

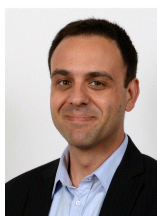
A recent function in Vertech':  
**Systems Integration Manager**

Our Systems Integration Manager plays an essential role in the quality control of our solutions installed: he controls and validates all platforms (material and software) prepared at Vertech's and aimed to be installed in glass plant. He also checks all specific developments before implementation.

Benoit Delacourt has been appointed Systems Integration Manager since he came back from USA to France, after managing Vertech' USA Inc. from 2008 to 2012.

Benoit is also in charge of post-installation audits, making sure the solutions installed are used with a maximum of efficiency by Operators and Managers in the plant.

He manages the commissioning of the SIL training sessions as well. The abovementioned training sessions are described in our [2014 training catalogue](#).



## Tech

How can you access SIL documentation?

You can access SIL manuals directly on SILWeb by clicking on the link on the right hand side of the screen:



You can also access manuals and 'How To' on Vertech' web site: log in and go to « Manuals ». (Login and Password will be sent upon request) :

